



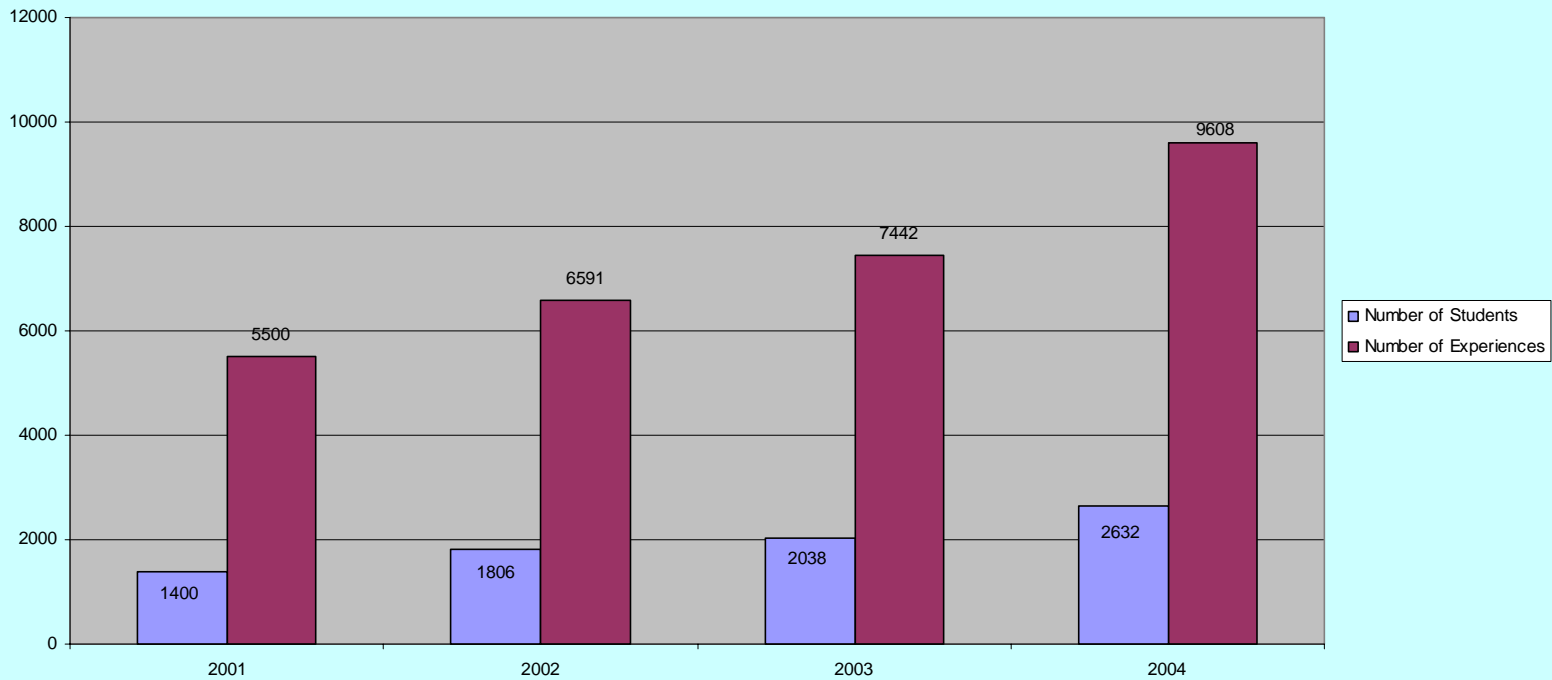
Maricopa Community Colleges

# CLINICAL COORDINATION

Program growth, scheduling densities, and future trends.

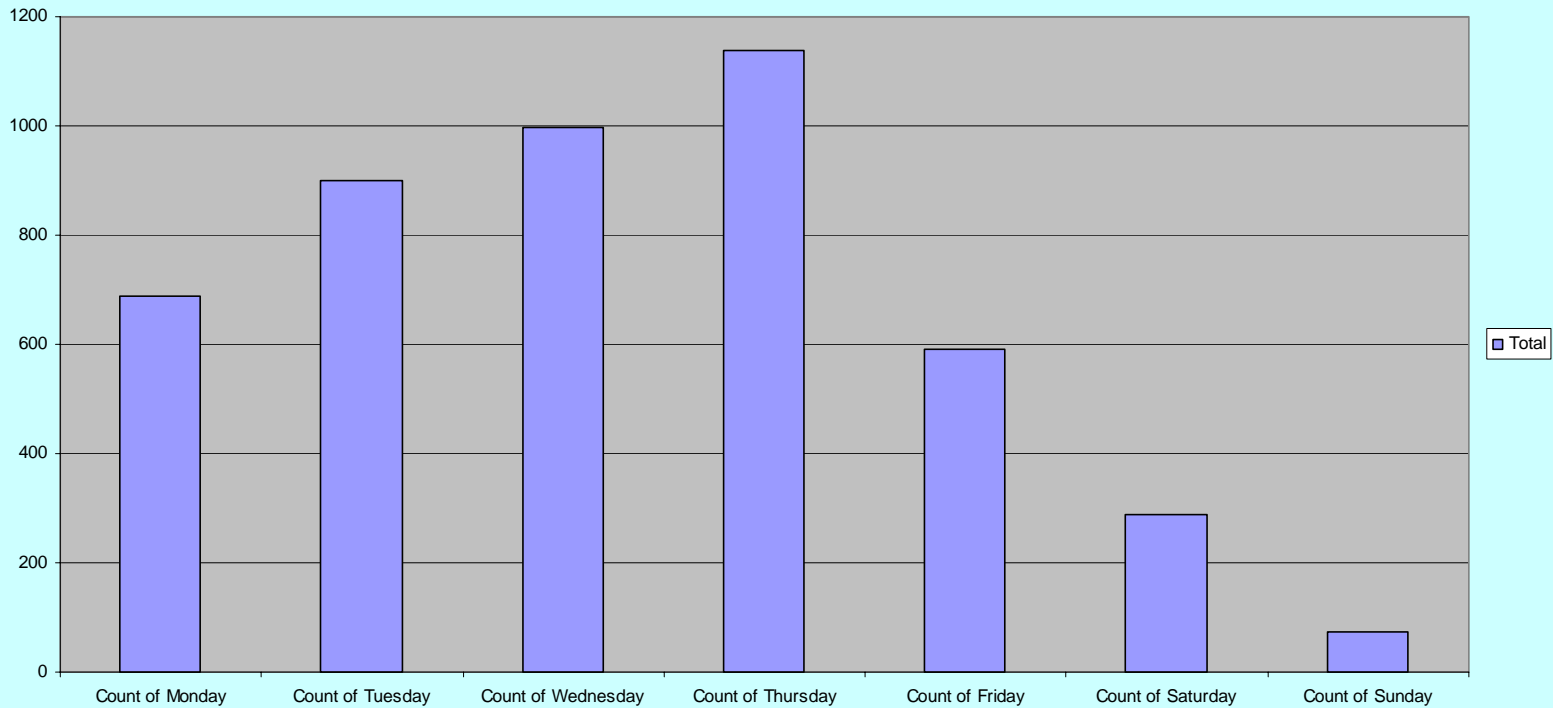
# Number of Students and Clinical Experiences

Total Number of Students and Clinical Experiences by Calendar Year (2001-2004)  
(MCCCD, ASU, & GCU)



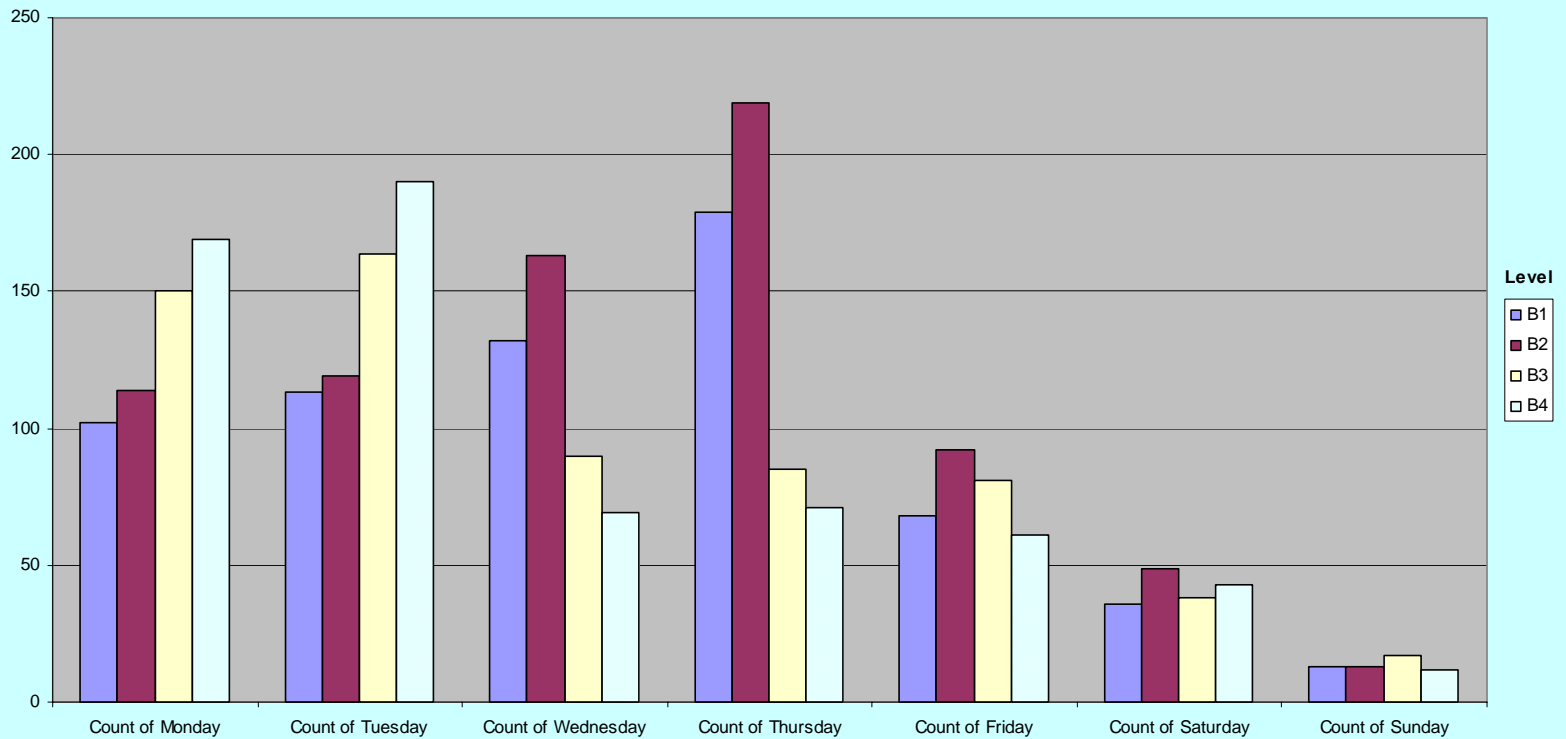
# Scheduling Density by Day of Week

Average Clinical Scheduling Density by Day of Week (2002-2004)  
All Participating Colleges/Universities



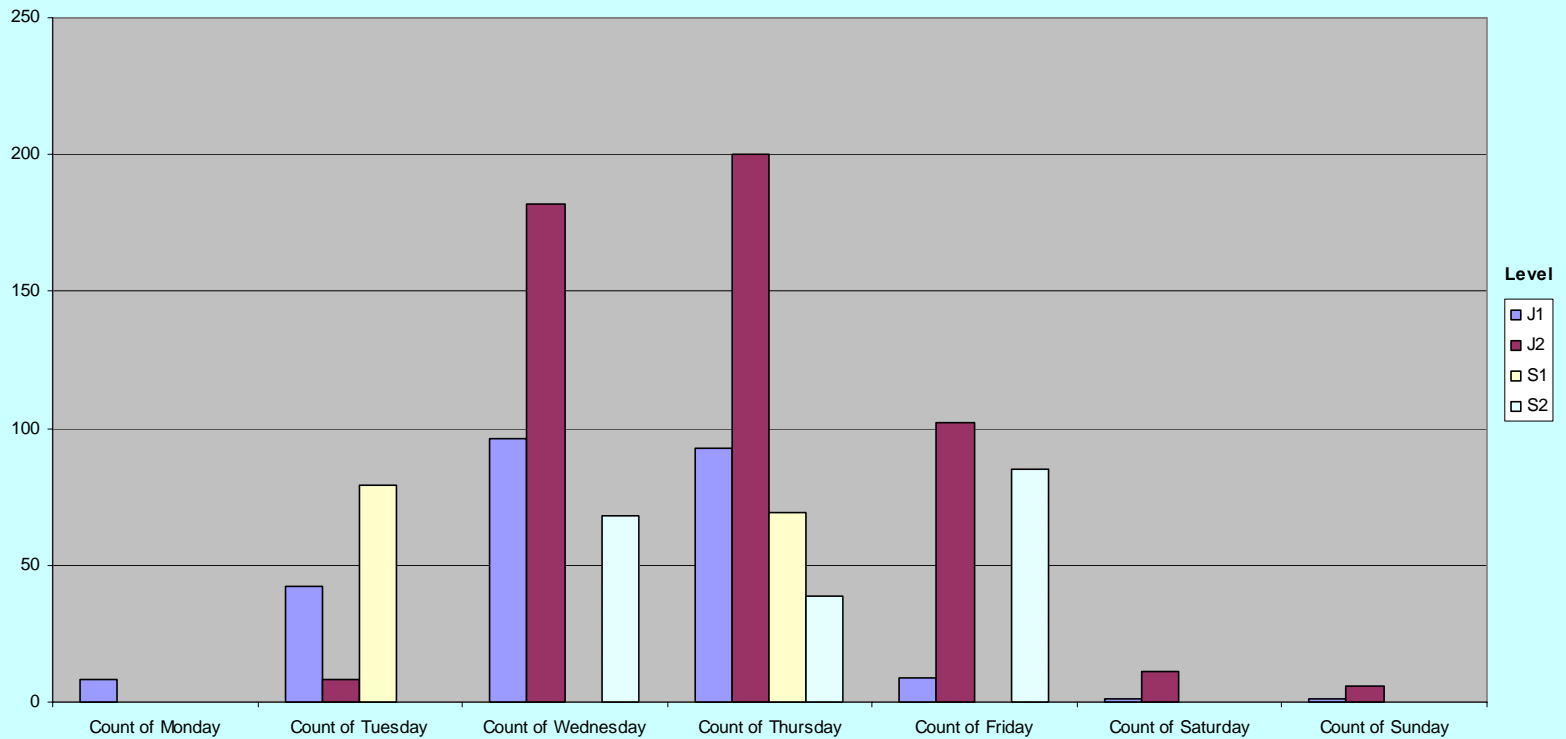
# Scheduling Density MCCCCD

MCCCCD Average Clinical Scheduling Density by Day of Week (2002-2004)



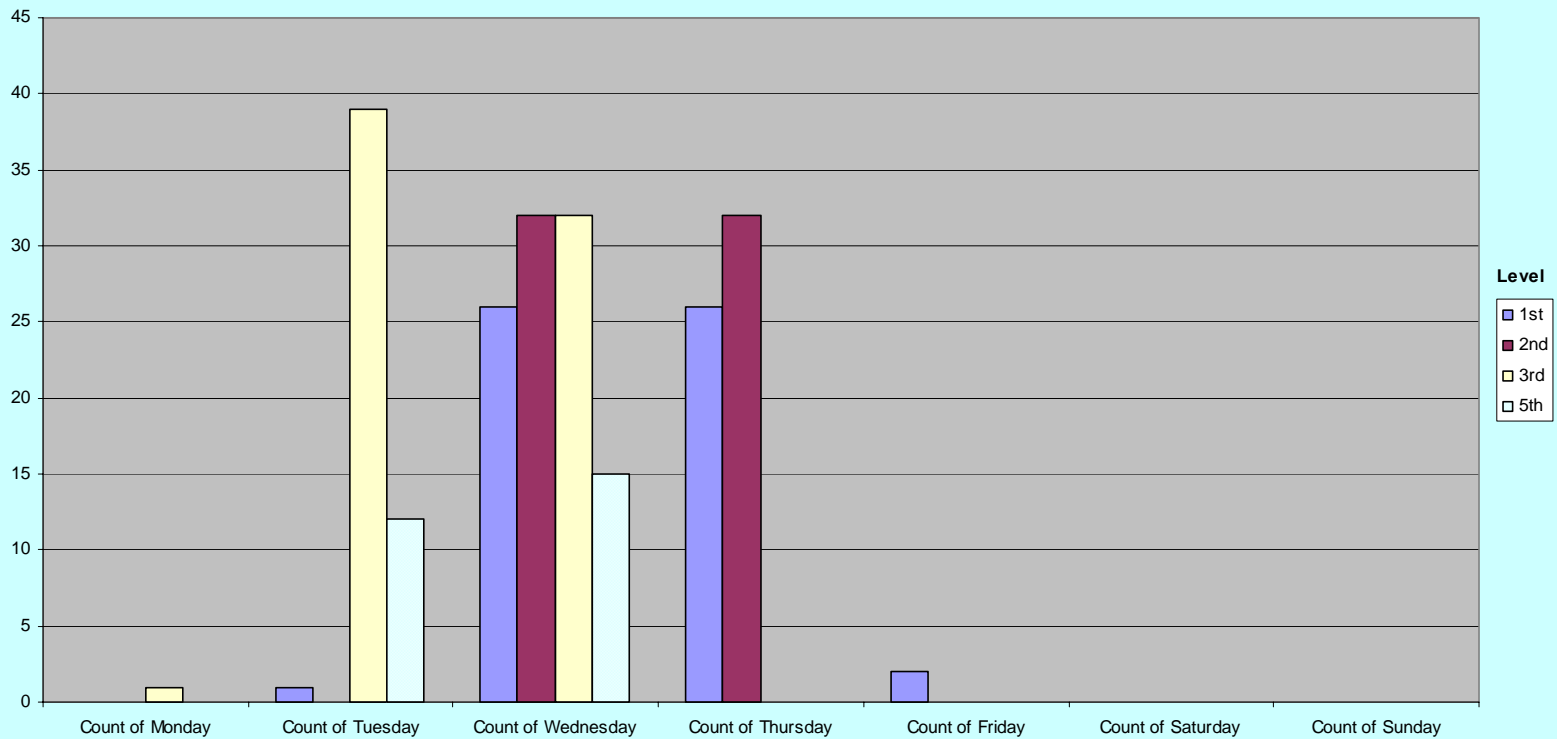
# Scheduling Density ASU

ASU Average Clinical Scheduling Density by Day of Week (2002-2004)



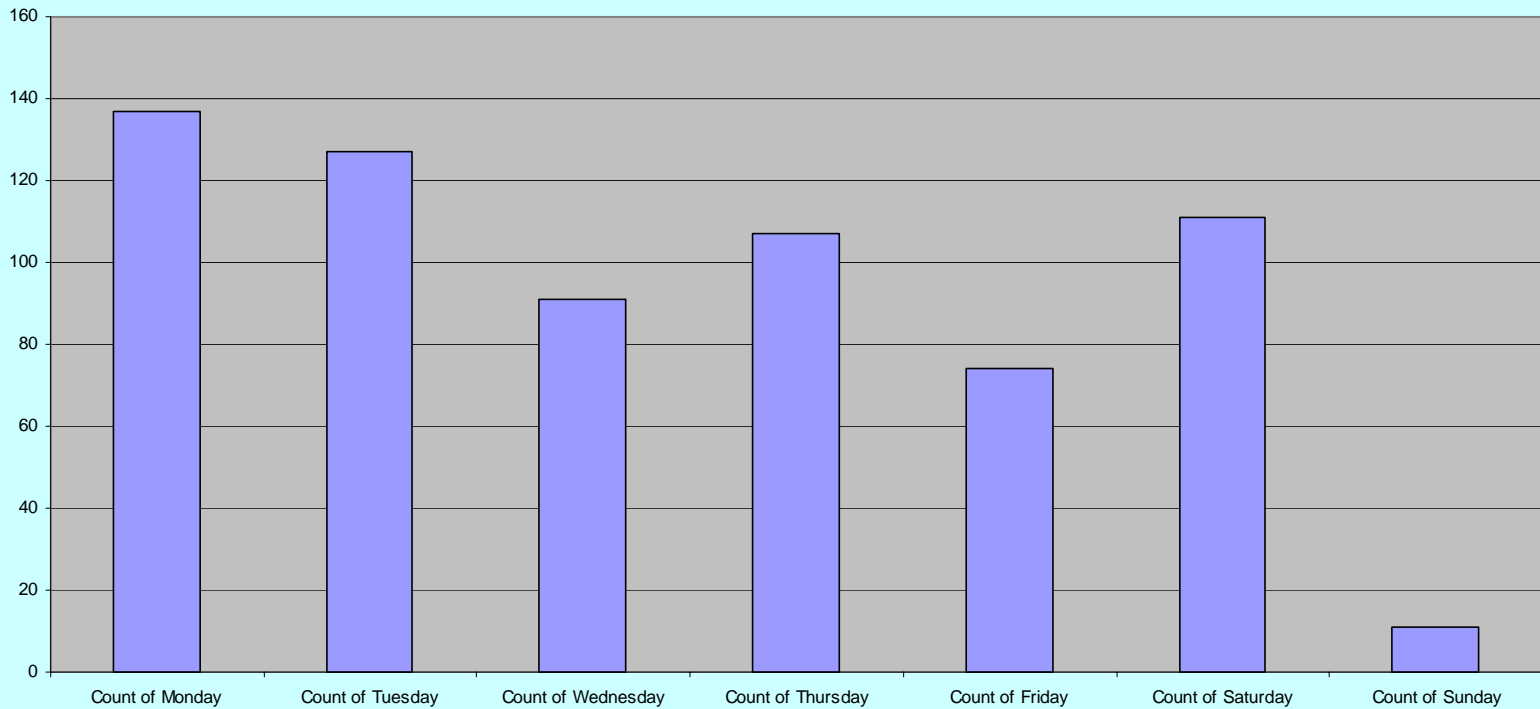
# Scheduling Density GCU

GCU Average Clinical Scheduling Density by Day of Week (2002-2004)



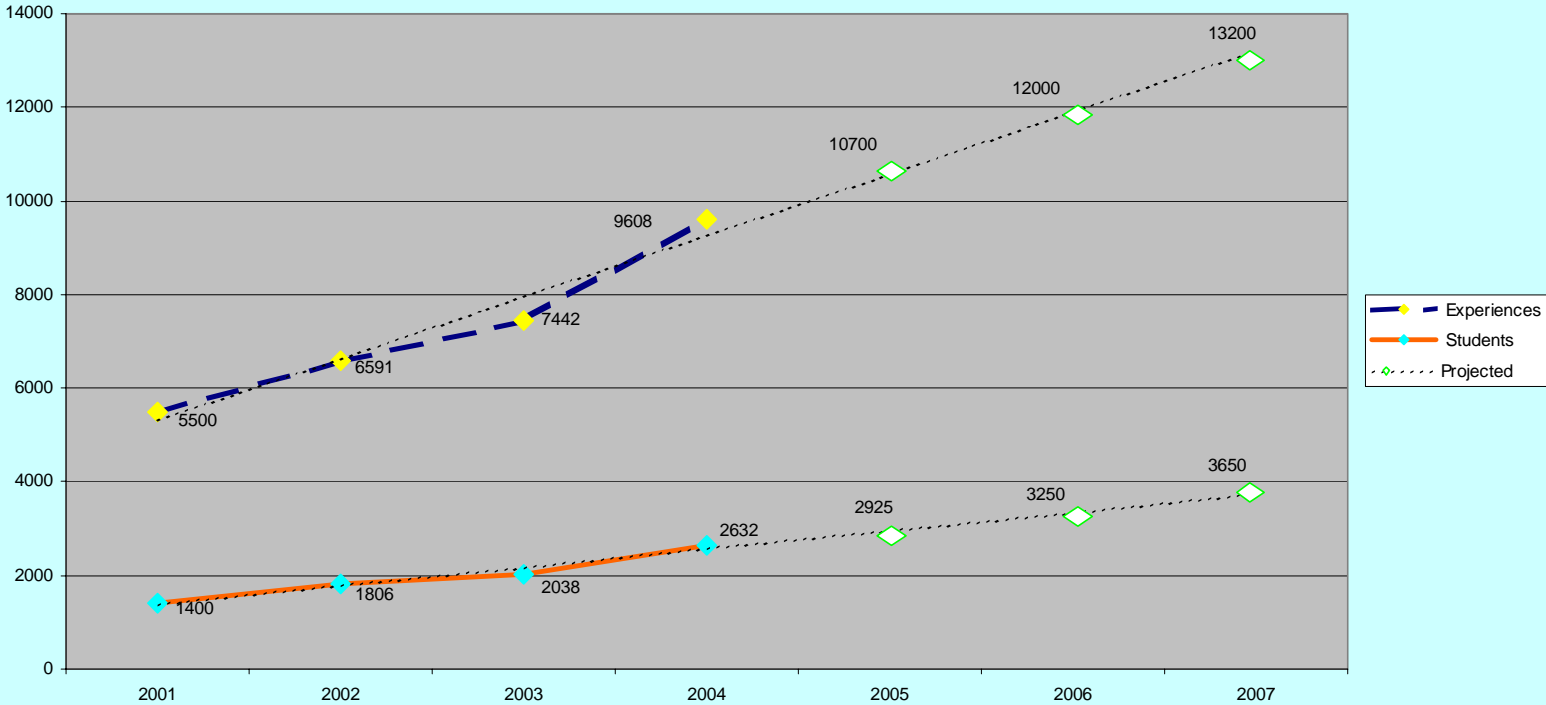
# Scheduling Density Nurse Assisting

Average Clinical Scheduling Density by Day of Week (2002-2004)  
Nurse Assisting (NA)



# Clinical Coordination Growth Trends

Projected Number of Students and Clinical Experiences Per Calendar Year 2005-2007  
(MCCCD, ASU, & GCU)





Maricopa Community Colleges

# CLINICAL COORDINATION

## Summary of Key Facts

Number of students scheduled<sup>1</sup> using the Clinical Coordination system has increased over 80% since program inception in 2001.

- Over 9,600 clinical experiences scheduled during calendar year 2004.
- Schedule density is typically highest on Wednesdays and Thursdays.
- Scheduling density for Nurse Assisting is high on all days except Sundays.

<sup>1</sup> Note: All totals are estimates based on total number of experiences and student enrollment. Estimates for calendar year 2001 are extrapolated from Fall 2001 data as student placement using the Clinical Coordination Pilot Project commenced Fall 2001.